



以质量求生存 以信誉求发展  
Strive for survival by quality  
To the credibility of development

# JED MACHINERY

Focus on screw and barrel  
design and production

专注螺杆与料筒设计与生产

[www.zsjiede.com](http://www.zsjiede.com)



舟山市杰德机械有限公司  
Zhoushan JED Machinery Co., Ltd

电话 (Tel): 0580-2186351

手机 (Mob): 13587087712

传真 (Fax): 0580-2186351

邮箱 (E-mail): 13587087712@163.com

中文网站 (Web): [www.zsjiede.com](http://www.zsjiede.com)

English website: [www.jed-machinery.com](http://www.jed-machinery.com)

地址: 舟山市定海区盐仓街道振兴中路17号

Add: No. 17, Zhenxing Middle Road, Yancang street,  
Dinghai District, Zhoushan City

微信



Whats App

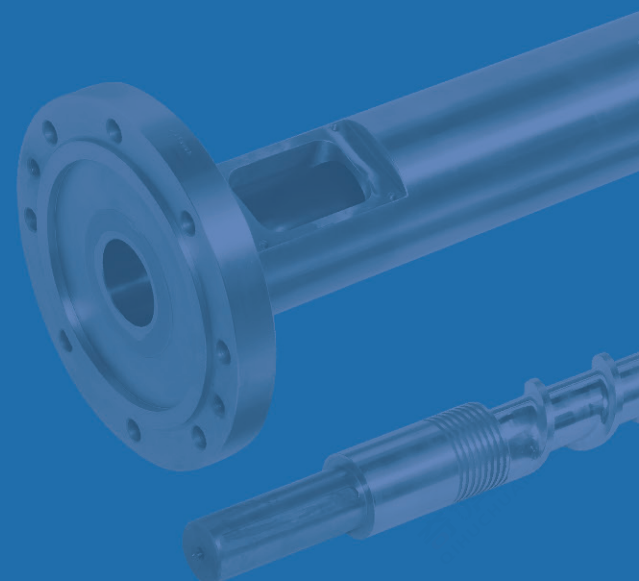
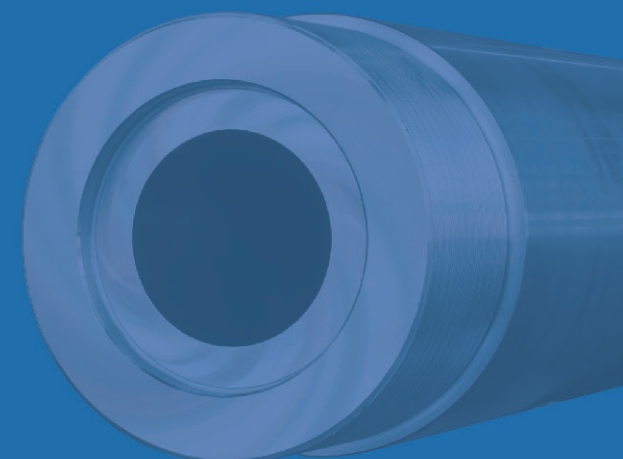


网站



# SCREW BARREL

舟山市杰德机械有限公司  
ZHOSHAN JED MACHINERY CO., LTD



|      |  |
|------|--|
| 01 / | ⊕ 企业简介<br>COMPANY PROFILE                                  |
| 02 / | ⊕ 品质管理<br>QUALITY CONTROL                                  |
| 03 / | ⊕ 品质保证<br>QUALITY ASSURANCE                                |
| 05 / | ⊕ 注塑机螺杆机筒<br>INJECTION MOLDING MACHINE SCREW BARREL        |
| 06 / | ⊕ 吹膜挤出螺杆机筒<br>SCREW BARREL FOR EXTRUSION OF FILM BLOWING   |
| 07 / | ⊕ 片材、板材挤出螺杆机筒<br>SHEET AND SHEET EXTRUSION SCREW BARREL    |
| 08 / | ⊕ 流延膜挤出螺杆机筒<br>CAST FILM EXTRUSION SCREW BARREL            |
| 09 / | ⊕ 线缆挤出螺杆机筒<br>CABLE EXTRUSION SCREW BARREL                 |
| 10 / | ⊕ 管材挤出螺杆机筒<br>TUBE EXTRUSION SCREW BARREL                  |
| 11 / | ⊕ 发泡挤出螺杆机筒<br>FOAMING EXTRUSION SCREW BARREL               |
| 12 / | ⊕ 吹塑挤出螺杆机筒<br>BLOW MOLDING EXTRUSION SCREW BARREL          |
| 13 / | ⊕ 橡胶挤出螺杆机筒<br>RUBBER EXTRUDER BARREL                       |
| 14 / | ⊕ 化纤纺丝挤出螺杆<br>SCREW BARREL FOR EXTRUSION OF CHEMICAL FIBER |



## CONTENTS

专注于塑机螺杆制造与研发  
FOCUS ON THE MANUFACTURING AND R & D OF PLASTIC MACHINE SCREW

|      |   |
|------|---|
| 15 / | ⊕ 回收造粒挤出螺杆机筒<br>RECYCLING GRANULATION EXTRUDER SCREW BARREL |
| 16 / | ⊕ 非标定制螺杆机筒<br>NON STANDARD CUSTOMIZED SCREW BARREL          |
| 17 / | ⊕ 锥形双螺杆机筒<br>CONICAL TWIN SCREW BARREL                      |
| 18 / | ⊕ 平形双螺杆机筒<br>FLAT TWIN SCREW BARREL                         |
| 19 / | ⊕ 双合金螺杆机筒<br>TWIN ALLOY SCREW BARREL                        |
| 21 / | ⊕ 螺杆种类特性<br>SCREW TYPE CHARACTERISTICS                      |
| 23 / | ⊕ 螺杆结构大全<br>COMPLETE SCREW STRUCTURE                        |



## 企业简介

Company profile

### 舟山市 杰德机械有限公司

舟山市杰德机械有限公司位于舟山市定海城西工业区振兴中路17号，是一家专业研发、设计、制造螺杆、机筒的生产企业。良好的品质和口碑源于公司十多年来的专注和努力，公司生产的机筒、螺杆为国内众多著名注塑机制造商长期配套，并被多次评为优秀供应商。

公司拥有先进的生产技术和设备，具有丰富的设计经验，为客户提供氮化、镀铬、不锈钢、双金属堆焊、碳化钨表面喷涂等各种产品，以适应不同用途的需要。

多年来，公司本着“以质量求生存、以信誉求发展”的理念，不断追求产品的高端化发展，为客户提供测绘、设计、来图制造、翻新修复等业务，以优良的品质、及时的服务谋求与客户共同发展。

### Zhoushan JED Machinery Co., Ltd

Zhoushan JED Machinery Co., Ltd. is located at No. 17, Zhenxing Middle Road, Dinghai West Industrial Zone, Zhoushan City. It is a manufacturer specializing in R & D, design and manufacture of screws and barrels. Good quality and reputation come from the company's focus and efforts for more than ten years. The barrel and screw produced by the company are long-term supporting for many famous domestic injection molding machine manufacturers, and have been rated as excellent suppliers for many times.

With advanced production technology and equipment and rich design experience, the company provides customers with nitriding, chromium plating, stainless steel, bimetallic surfacing, tungsten carbide surface spraying and other products to meet the needs of different uses.

Over the years, based on the concept of "survival by quality and development by reputation", the company has continuously pursued the high-end development of products, provided customers with mapping, design, drawing manufacturing, renovation and repair and other businesses, and sought common development with customers with excellent quality and timely service.



## 品质管理

Quality Control

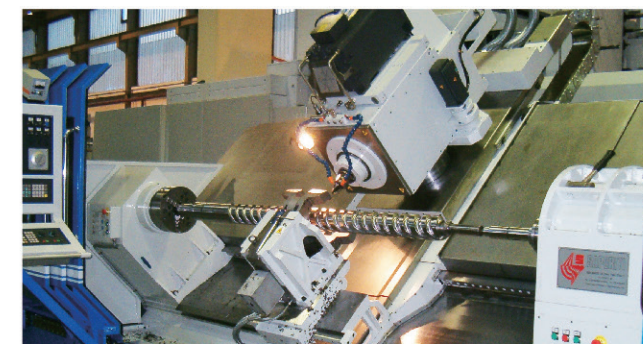


### 完善的质量管理体系

Perfect quality management system

制造理念先进而高效。原材料均经过严格筛选、产品经过全面质量检验，确保产品稳定高效。

The manufacturing concept is advanced and efficient. The raw materials are strictly screened and the products are subject to comprehensive quality inspection to ensure the stability and high efficiency of the products.



### 坚持创新进取

Be innovative and progressive

我们的研发团队富于创新，根据市场需求发展趋势，坚持引入新的生产方式。为客户提供与时俱进的产品。

Our research team is innovative and insists on introducing new production methods according to the development trend of market demand. Provide customers with products that keep pace with the times.



### 方案设计与技术支持

Solution design and technical support

公司提供产品方案设计、产品修复、技术支持、技术咨询。

优化设计、降低成本、提高效率 and 品质，使产品和服务更具优势。

The company provides product scheme design, product repair, technical support and technical consultation.

Optimize design, reduce cost, improve efficiency and quality, and make products and services more advantageous.



### 让客户满意

Let customers satisfied

我们以客户为本，为客户提供全程服务。

客户的满意是我们的最高追求。

Gaoxin company is customer-oriented and provides customers with full service.

Customer satisfaction is our highest pursuit.



## 品质保证

Quality Assurance

杰德公司拥有10多年专业生产螺杆、机筒的经验，聚集了一批善经营、懂管理、技术精湛、求卓越的优秀员工。公司雄厚的实力和专业的团队，是优质产品的保证。

公司严格按照ISO 9001:2000质量管理体系标准，从材料的选择、产品的设计、生产和包装，每道工序都经过严格的检验和专人把关，保证到客户手里的每件产品高品质、高标准。



## 品质保证

Quality Assurance

Jed company has more than 10 years of experience in professional production of screw and barrel, and has gathered a group of excellent employees who are good at operation, understand management, exquisite technology and strive for excellence. The company's strong strength and professional team are the guarantee of high-quality products. In strict accordance with the ISO 9001:2000 quality management system standard, the company has undergone strict inspection and special personnel to ensure the high quality and high standard of each product in the hands of customers from the selection of materials, product design, production and packaging.





## 注塑机螺杆机筒

Injection Molding Machine Screw Barrel



## 注塑机螺杆附件

Screw accessories of injection molding machine

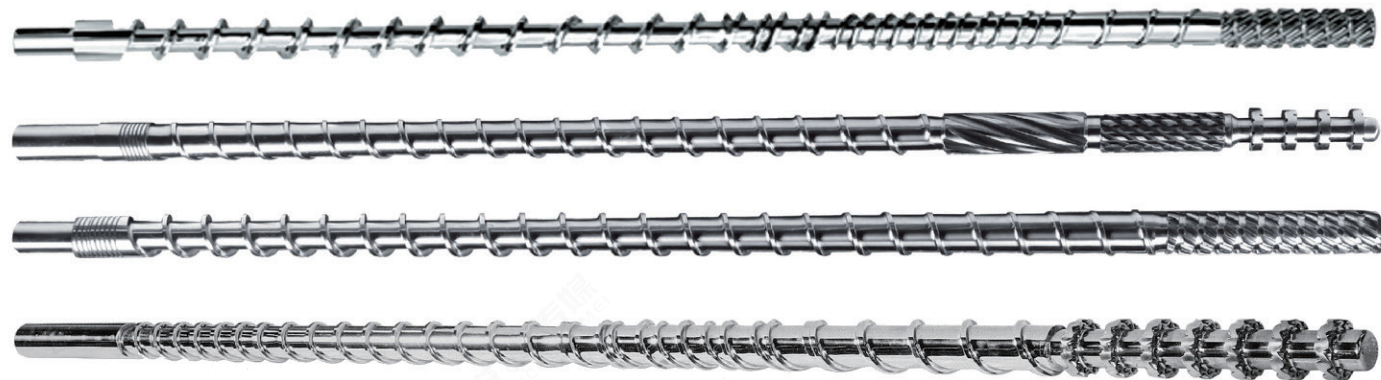
过胶头、过胶圈、过胶介子、射座法兰、接座、接头、喷嘴、冷水套、螺母、尼龙专用内外弹簧式喷嘴、止逆式油压法兰。Rubber head, rubber ring, rubber meson, shooting seat flange, socket, joint, nozzle, cold water sleeve, nut, nylon special internal and external spring nozzle, oil pressure flange.



| 理论注塑量(g)<br>Amount of Injection | 螺杆直径 X长度(mm)<br>Screw Diameter X Length | 料筒外径X长度(mm)<br>Barrel Diameter X Length | 理论注塑量(g)<br>Amount of Injection | 螺杆直径 X长度(mm)<br>Screw Diameter X Length | 料筒外径X长度(mm)<br>Barrel Diameter X Length |
|---------------------------------|---|---|---------------------------------|---|---|
| 30-90                           | Φ30x900                                 | Φ85x860                                 | 80-125                          | Φ75x1825                                | Φ170x1725                               |
| 60-125                          | Φ35x910                                 | Φ85x860                                 | 100-150                         | Φ80x2000                                | Φ180x1805                               |
| 100-150                         | Φ38x935                                 | Φ95x900                                 | 125-200                         | Φ85x2300                                | Φ190x1900                               |
| 125-160                         | Φ40x980                                 | Φ95x910                                 | 200-300                         | Φ90x2700                                | Φ210x2000                               |
| 125-300                         | Φ42x1030                                | Φ105x8880                               | 250-500                         | Φ100x2600                               | Φ230x2405                               |
| 250-400                         | Φ45x1210                                | Φ115x1165                               | 300-600                         | Φ110x2600                               | Φ256x2590                               |
| 300-500                         | Φ50x1300                                | Φ125x1260                               | 400-1000                        | Φ120x2800                               | Φ256x2800                               |
| 450-600                         | Φ55x1335                                | Φ130x1320                               | 600-800                         | Φ130x3010                               | Φ256x2970                               |
| 500-700                         | Φ56x1350                                | Φ130x1350                               | 800-1000                        | Φ145x3010                               | Φ256x3200                               |
| 500-700                         | Φ60x1380                                | Φ140x1350                               | 1000-1500                       | Φ160x3500                               | Φ270x3200                               |
| 650-800                         | Φ65x1415                                | Φ150x1420                               | 1300-2500                       | Φ170x3415                               | Φ317X3380                               |
| 700-1000                        | Φ70x1790                                | Φ160x1685                               |                                 |   |   |

## 吹膜挤出螺杆机筒

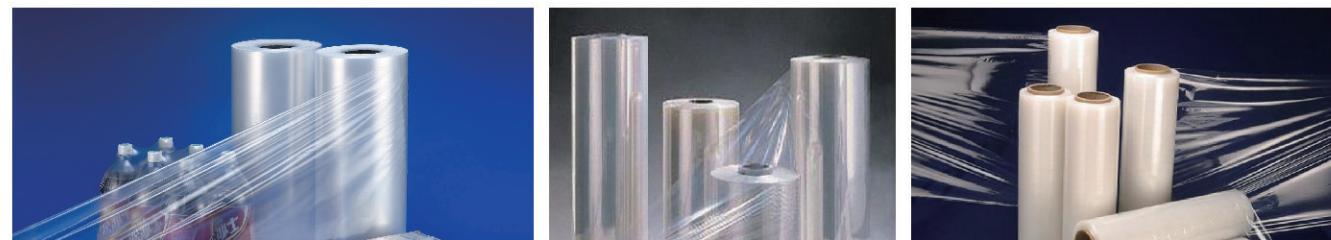
Screw Barrel For Extrusion Of Film Blowing



## 应用范围

Scope of Application

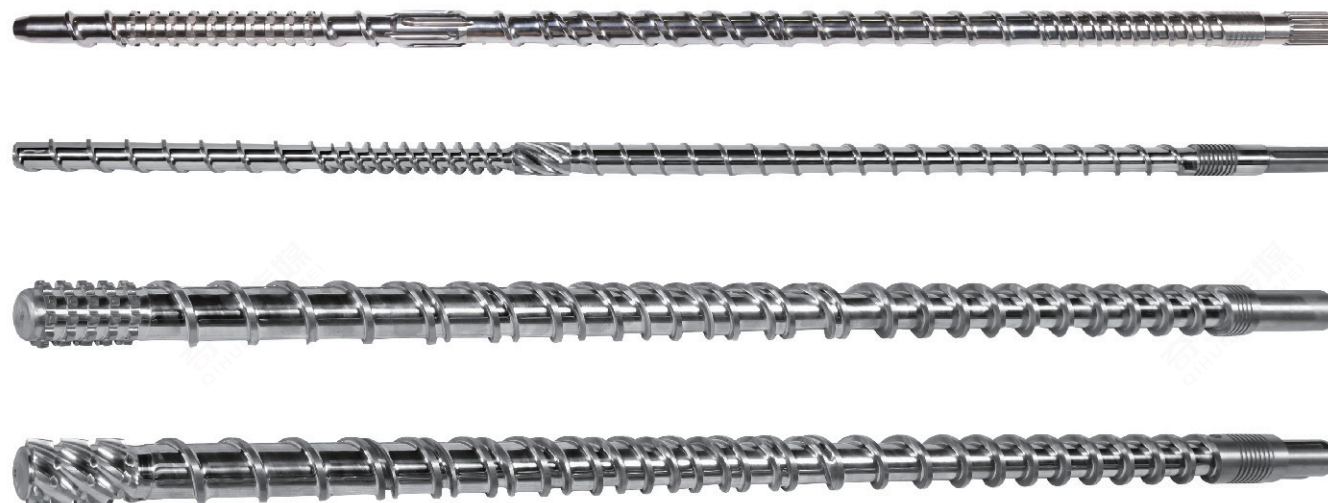
- PP、PA、EVOH、mLLDPE、LLDPE、HDPE阻隔膜
- LDPE、mLLDPE、LLDPE、PP、二元共聚PP、三元共PP等原料生产包装薄膜和复合包装材料
- PA、EVOH高阻隔隔热收缩薄膜
- PP、PE、PP结构的POF热收缩膜
- LLDPE、mLLDPE、LDPE、HDPE、EVA土工膜等领域
- LLDPE、mLLDPE、LDPE、HDPE、EVA等农膜
- mLLDPE、LLDPE、LDPE、EVA等各类高透明性包装薄膜
- TPU薄膜
- PP, PA, EVOH, mLLDPE, LLDPE and HDPE barrier membrane
- LDPE, mLLDPE, LLDPE, PP, binary polymerization PP, terpolymer PP and other packing film and composite packaging material for raw materials
- PA and EVOH high-barrier shrink film
- POF shrink film of PP, PE, PP structure
- LLDPE, mLLDPE, LDPE, HDPE and EVA geomembrane
- LLDPE, mLLDPE, LDPE, HDPE and EVA agricultural film
- mLLDPE, LLDPE, LDPE and EVA high-transparency packaging films
- TPU film





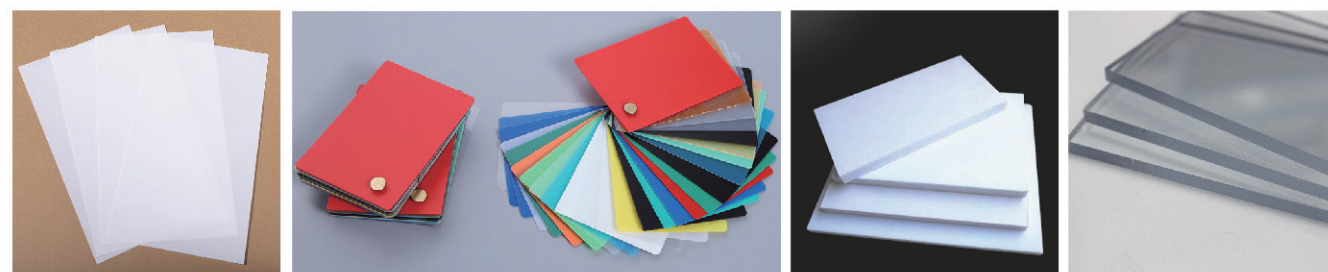
## 片材、板材挤出螺杆机筒

Sheet and Sheet Extrusion Screw Barrel



### 应用范围 Scope of Application

- PE板材、PE片材、PP板材、PP片材、PVC板材、PVC片材等(包装、化工、电力、工程、机械)
- PS发泡片材、PS板材、ABS板材等(保温板、装饰装潢、家电外壳、箱包、玩具、电子产品耗材)
- PMMA板材、PC板材、PETG板材等(化工、文教、车、船、飞机制造工业中; 光学照明如大型灯罩、防爆灯、汽车飞机的窗玻璃)
- PA板材、PEEK板材、PTFE板材、PVDF板材
- PE sheet, PE sheet, PP sheet, PP sheet, PVC sheet, PVC sheet, etc. (packaging, chemical industry, electric power, engineering, machinery)
- PS foam sheet, PS sheet, ABS sheet, etc. (insulation board, decoration, home appliance shell, bags, toys, electronic products consumables)
- PMMA sheet, PC sheet, PETG sheet, etc. (chemical industry, culture and education, car, ship, aircraft manufacturing industry; Optical lighting such as large lampshades, explosion-proof lights, window panes of automobiles and airplanes)
- PA sheet, PEEK sheet, PTFE sheet, PVDF sheet



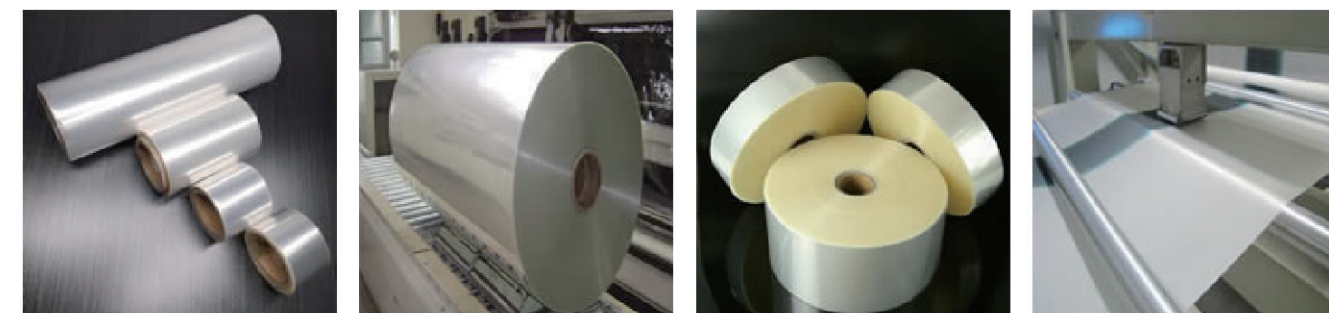
## 流延膜挤出螺杆机筒

Cast Film Extrusion Screw Barrel



### 应用范围 Scope of Application

- PVB 玻璃夹层膜, 广泛应用于汽车及特殊应用行业
- PE 流延薄膜, 应用于包装行业
- BOPP 双向拉伸薄膜, 应用于包装行业
- PP 环保木纹膜, 应用于包装、装饰行业
- CPP 薄膜, PP 文具薄膜及 PP 文具片材
- EVA 高粘度流延薄膜, 广泛应用于安全平板夹层玻璃、弧型夹层玻璃、工艺夹层玻璃、防弹玻璃、变色夹层玻璃、导电智能玻璃、太阳能电池等特种玻璃的深加工之中。
- PVB glass laminated film is widely used in automotive and special applications
- PE flow film, used in packaging industry
- BOPP bidirectional stretch film, used in packaging industry
- PP environmental protection wood grain film, used in packaging, decoration industry
- CPP film, PP stationery film and PP stationery sheet
- EVA high viscosity flow film is widely used in the deep processing of safety plate laminated glass, arc laminated glass, process laminated glass, bullet-proof glass, color-changing laminated glass, conductive intelligent glass, solar cells and other special glass.



CPP流延膜

BOPP流延膜

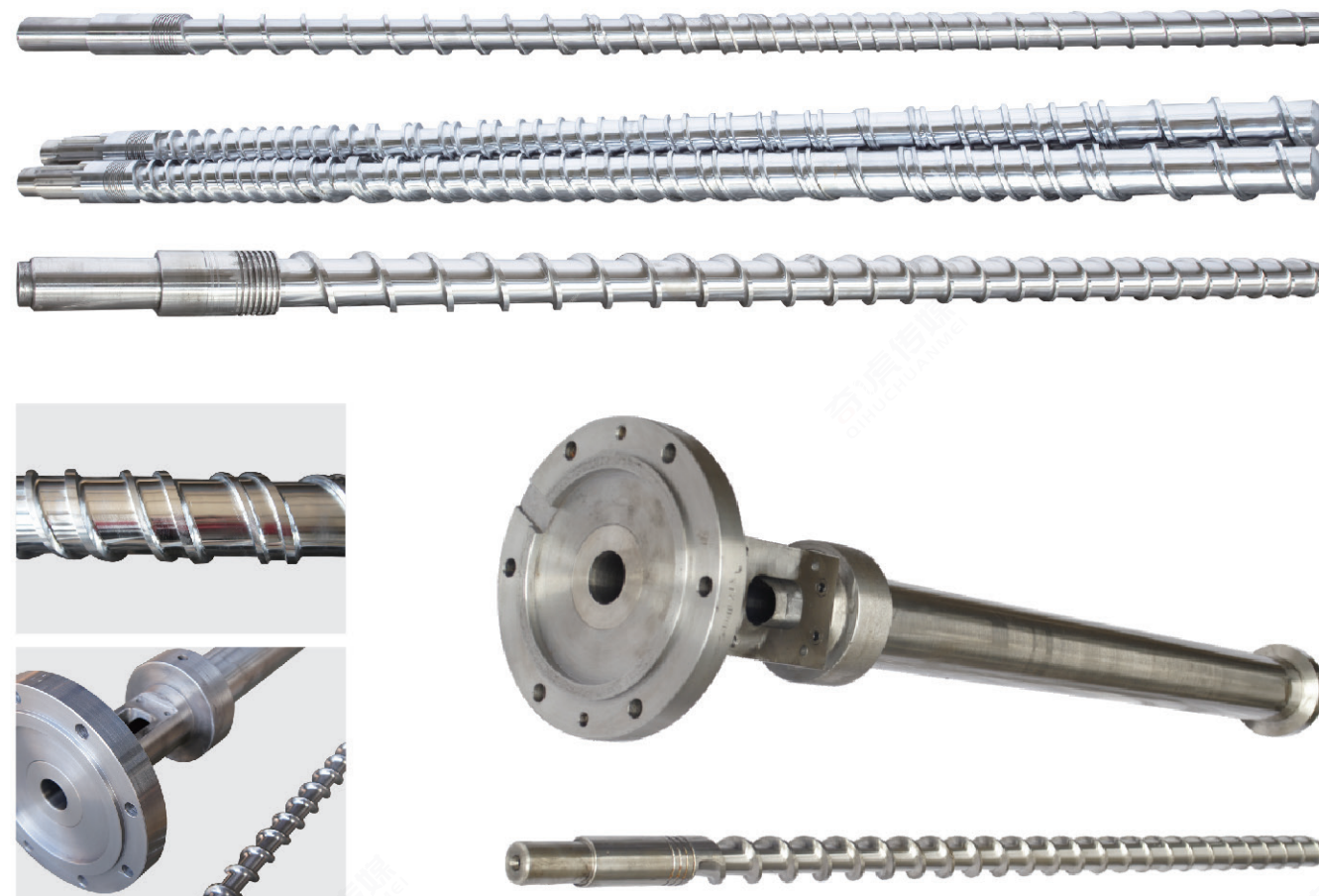
PE流延膜

PVB流延膜



## 线缆挤出螺杆机筒

Cable Extrusion Screw Barrel



### 应用范围

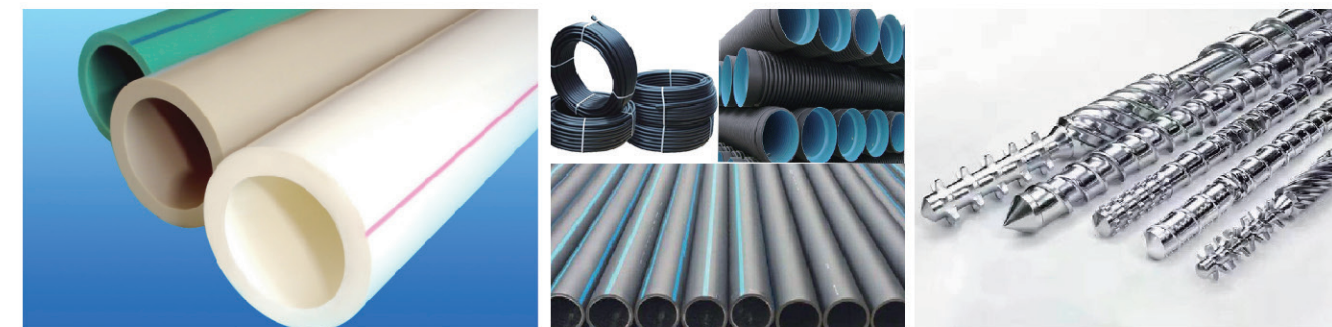
#### Scope of Application

- PVC、PE、XL-PE、TPU、LSZH (低烟无卤)电源线、数据线、网络线、电子线、建筑线、控制线
- Foam-PE(发泡PE)高频线信号线数据线等线材Foam-skin绝缘
- Foam-PE/PE (注氮) CATV、RG、SYWV、JIS系列Skin-Foam物理发泡绝缘
- PVC、PE、XL-PE、TPU、LSZH (low smoke and no halogen) Power cord, data cord, network cord, electronic cord, building cord, control cord
- Foam-PE(Foam PE) High frequency wire, signal wire, data wire and other wire Foam-skin insulation
- Foam-PE/PE (nitrogen injection) CATV, RG, SYWV, JIS series Skin-Foam physical foam insulation



## 管材挤出螺杆机筒

Tube Extrusion Screw Barrel



### 应用范围

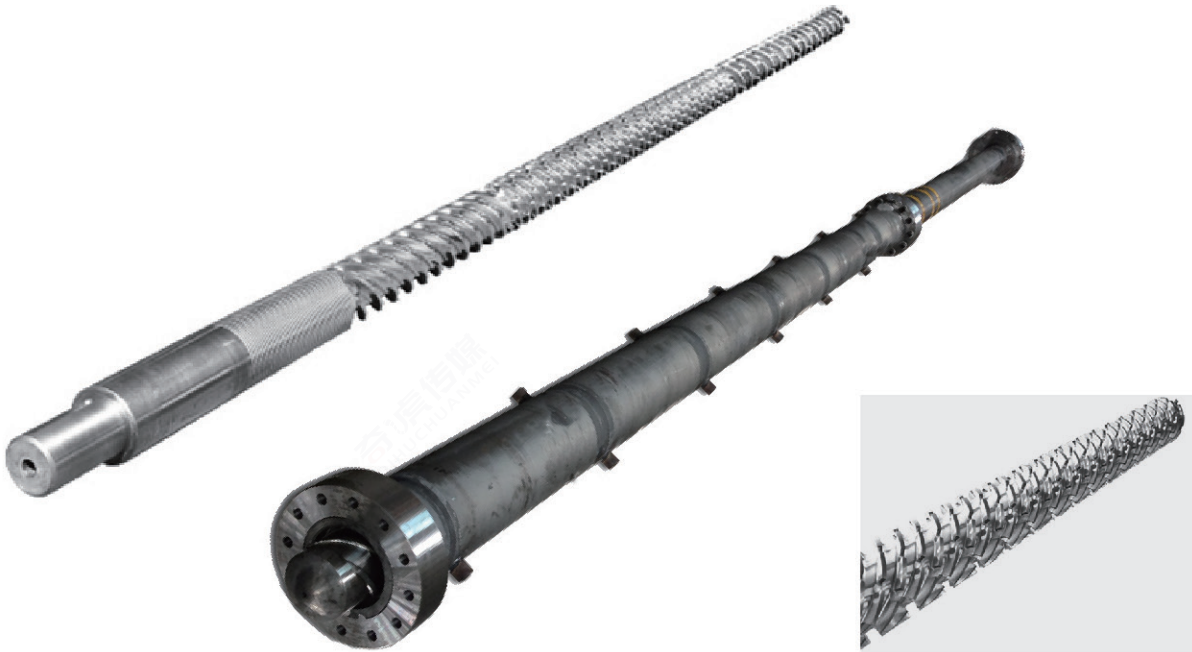
#### Scope of Application

- HDPE/PP/PVC 大口径双壁波纹管
- UPVC 实壁管材
- PVC-C 埋地式高压电力线缆护套管
- PP-R、PE-RT、PE-X 等冷热水管
- RTP 骨架增强复合管
- P 超静音排水管
- PVC 医用管
- PMMA、PC、ABS、PP 等特殊管
- HDPE 供排水管、燃气管、大口径HDPE二层、三层双抗管
- HDPE/PP/PVC 大口径双壁波纹管及PVC加筋管
- MPP 电力管(改性聚丙烯管、MPP电缆管、MPP电力电缆保护管)
- PVC、PP 特种用途的小单壁、双壁波纹管
- HDPE/PP/PVC large-diameter double-wall corrugated pipe
- UPVC solid-wall pipe
- PVC-C buried high voltage power cable shield
- PP-R, PE-RT and PE-X cold and hot water pipe
- RTP framework reinforced composite pipe
- P super-silent drain pipe
- PVC pipe for medical application
- PMMA, PC, ABS, PP and other special-purpose pipes
- HDPE water supply and drainage pipe, gas pipe and large-diameter HDPE two/ three-layer anti-scaling & corrosion pipe
- HDPE/PP/PVC large-diameter double-wall corrugated pipe and PVC ruffled tube
- MPP cable tube (modified polypropylene pipe, MPP cable tube and MPP cable shield)
- Special-purpose PVC and PP small single/double-wall corrugated pipe



发泡挤出螺杆机筒

Foaming extrusion screw barrel



应用范围  
Scope of Application

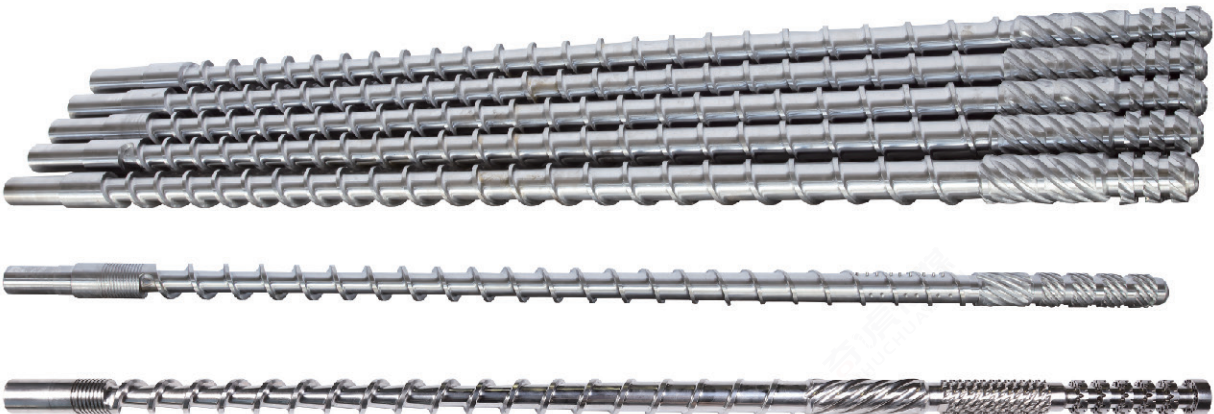
- ◉ 适用聚乙烯塑料粒子，经过加温、熔化、挤压、催化、发泡形成珍珠棉棒材、管材、U型材、V型、水果网等塑料材料
- ◉ Suitable for polyethylene plastic particles, after heating, melting, extrusion, catalysis, foaming to form pearl cotton bar, pipe, U profile, V-shaped, fruit mesh and other plastic materials

| 型号(Model)        | FLY-90/FLY-75 | FLY-105  | FLY-120  | FLY-130/FLY-135 | FLY-150  | FLY-170  | FLY-180  |
|------------------|---------------|----------|----------|-----------------|----------|----------|----------|
| 螺杆直径(Screw dia)  | 90mm/75mm     | 105mm    | 120mm    | 130mm/135mm     | 150mm    | 170mm    | 180mm    |
| 螺杆长径比(Screw L:D) | 55:1          | 55:1     | 55:1     | 55:1            | 55:1     | 55:1     | 52:1     |
| 生产能力(Output)     | ≤100kg/h      | ≤120kg/h | ≤160kg/h | ≤180kg/h        | ≤280kg/h | ≤400kg/h | ≤500kg/h |



吹塑挤出螺杆机筒

Blow Molding Extrusion Screw Barrel



应用范围  
Scope of Application

- ◉ 异形件吹塑机：椅子背、底座、托盘、汽车水箱、工具箱等
- ◉ 尿素、化工堆码筒机
- ◉ 日化洗涤吹瓶机
- ◉ 食品饮料吹瓶机
- ◉ 公路设施吹塑机
- ◉ Shaped parts blow molding machine: chair back, base, tray, car water tank, toolbox, etc
- ◉ Urea, chemical stacking cylinder machine
- ◉ Daily chemical washing and blowing machine
- ◉ Food and beverage bottle blowing machine
- ◉ Blow molding machine for highway facilities





## 橡胶挤出螺杆机筒

Rubber Extruder Barrel



### 螺杆种类 Screw type

- 不同的橡胶产品，可以选择不同结构的螺杆，更能提高产品的质量和效率，根据客户的不同要求来决定。
- Different rubber products, can choose different structure of screw, can improve the quality and efficiency of products, according to the different requirements of customers to decide.



## 化纤纺丝挤出螺杆

Screw Barrel For Extrusion Of Chemical Fiber



### 应用范围 Scope of Application

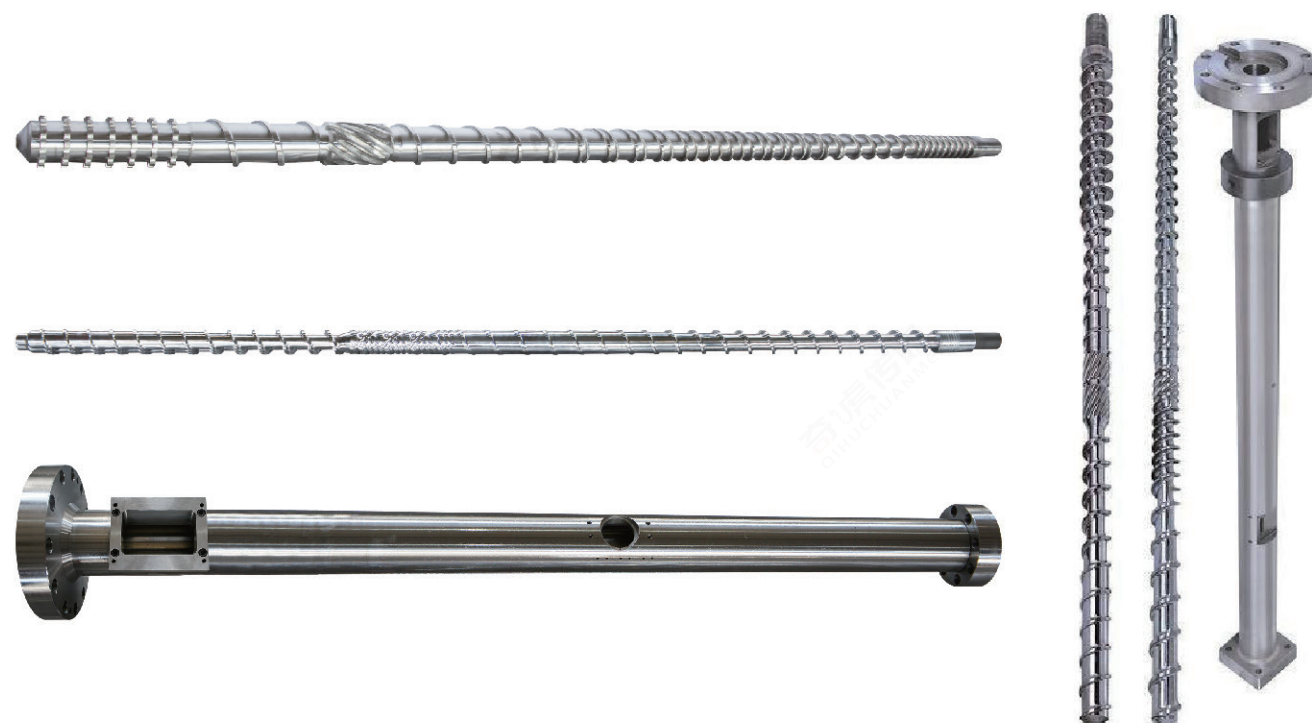
- PET、PA6、PA66、PP等切片，主要应用于低速、高速化纤纺丝
- PET, PA6, PA66, PP Chips, mainly used in low-speed, high-speed chemical fiber spinning;





## 回收造粒挤出螺杆机筒

Recycling Granulation Extruder Screw Barrel



### 应用范围 Scope of Application

- PP、PP、PVC、EVA膜料造粒
- PP打包带、无纺布造粒
- PA尼龙布造粒
- ABS、HIPS、PC、PS粉末塑料造粒
- PVC颗粒回收造粒
- EVA发泡料回收造粒
- ABS、PC、PP工程塑料造粒
- PP, PP, PVC, EVA film granulation
- PP packing belt, Non-woven granulation
- PA nylon cloth granulation
- ABS, HIPS, PC, PS powder plastic granulation
- PVC particle recovery granulation
- EVA foam material recycling granulation
- Granulation of ABS, PC, PP engineering plastics



## 非标定制螺杆机筒

Non Standard Customized Screw Barrel



### 应用范围 Scope of Application

- 产品广泛应用与奶粉、食品、保健品、药品、化工、化妆品等自动化包装机械
- Products are widely used in milk powder, food, health products, pharmaceuticals, chemicals, cosmetics and other automated packaging machinery





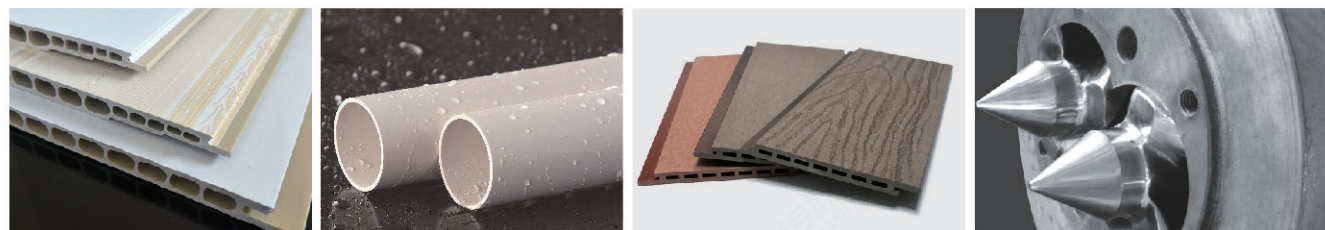
## 锥形双螺杆机筒

Conical Twin Screw Barrel



### 应用范围 Scope of Application

- PVC塑钢型材
- PVC树脂瓦、PE波纹管
- PVC、PE、PP木塑型材
- PVC、PP、PE、PC、ABS等异型材挤出
- PVC木塑(发泡)门板、装饰板等宽幅板材
- PS、PET、PC、PMMA、TPU等异型材
- PVC plastic steel profiles
- PVC resin tile, PE bellows
- PVC, PE, PP wood plastic profiles
- PVC, PP, PE, PC, ABS and other profiles extrusion
- PVC wood plastic (foamed) door panels, decorative boards and other wide board
- PS, PET, PC, PMMA, TPU and other profiles



## 平形双螺杆机筒

Flat Twin Screw Barrel



### 螺杆、机筒规格 Specifications of screw and barre

螺杆直径:  $\Phi 45\text{mm}-\Phi 200\text{mm}$

长径比: 16-35

螺杆压缩比能根据不同产品和不同配方进行设计

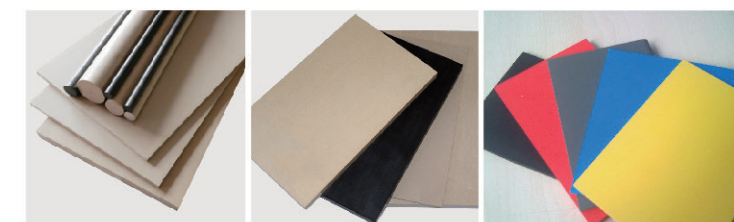
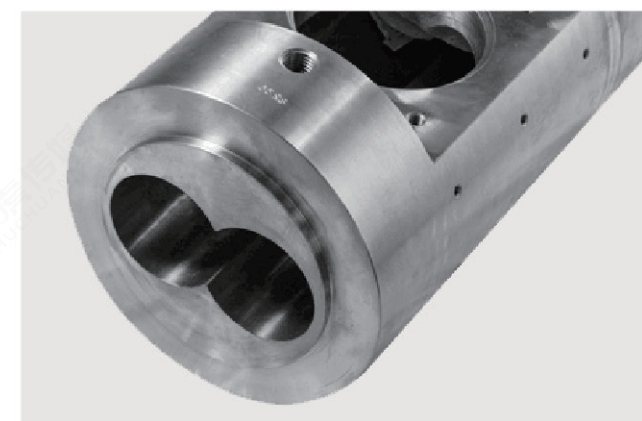
Diameter:  $\Phi 45\text{mm}-\Phi 200\text{mm}$

L/D ratio: 16-35

The compression ratio of screws can be designed according to different products and ingredients

### 应用范围 Scope of Application

- 生产PE铝塑板、PE、PP等
- 各种新型材料造粒, 产能高、塑化好
- Production of PE aluminum plastic plate, PE, PP, etc;
- Various new materials are granulated, with high production capacity and good plasticization.





## 双合金螺杆机筒

Twin Alloy Screw Barrel

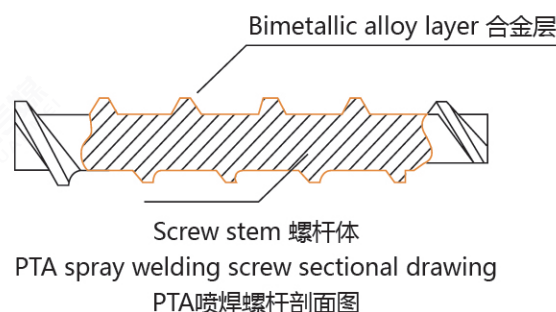


### 用途区分:

各种立式、卧式射出机、挤出机、注塑机、电木机、橡胶筒、吹膜机等。

### 产品应用范围:

适用于LCP、PA+GF、PET+GF、PBT+GF、PC+GF等各类塑料添加玻璃纤维、防火剂、碳粉及PPA、PPO、LCP、磁粉、PC等特殊工程塑胶。



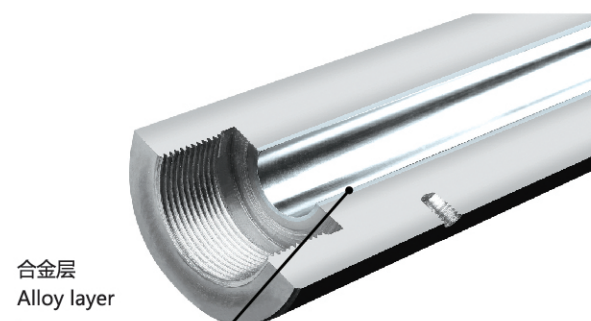
### 加工范围:

双合金螺杆: 外径:  $\Phi 15\text{mm}-\Phi 360\text{mm}$ ; 有效长度: 10000mm  
 双合金料管: 内径:  $\Phi 14\text{mm}-\Phi 200\text{mm}$ ; 有效长度: 6000mm  
 皮膜密度: 98-99.8%  
 硬度: HV1100-1400C  
 密著强度: 10000Psi 以上  
 双金属机筒: 母材38CrMoAlA、40Cr、42CrMo  
 双金属螺杆: 母材38CrMoAlA、31CrMoV9(国外)



### Classification of uses:

Various vertical, horizontal injection machine, extruder, injection molding machine, bakelwood machine, rubber cylinder, film blowing machine, etc.



### Product application scope:

Suitable for LCP, PA+GF, PET+GF, PBT+GF, PC+GF and other plastics with glass fiber, fireproofing agent, carbon powder and PPA, PPO, LCP, magnetic powder, PC and other special engineering plastics.

### Processing area:

Double alloy screw: outer diameter:  $\Phi 15\text{mm}-\Phi 360\text{mm}$ ; effective length: 10000mm  
 Double alloy material pipe: inner diameter:  $\Phi 14\text{mm}-\Phi 200\text{mm}$ ; effective length: 6000mm  
 Membrane density: 98-99.8%  
 Hardness: HV1100-1400C  
 Adhesion strength: above 10000psi  
 Bimetal barrel: base metal 38CrMoAlA, 40Cr, 42CrMo  
 Bimetal screw: base metal 38CrMoAlA, 31CrMoV9 (foreign)

## 双合金螺杆机筒

Twin Alloy Screw Barrel

### 双金级别:

A级: 含钨40%  
 B级: 含钨25%  
 C级: 含钨95%  
 合金硬度:  
 HRC 56~65°C

### Double gold level:

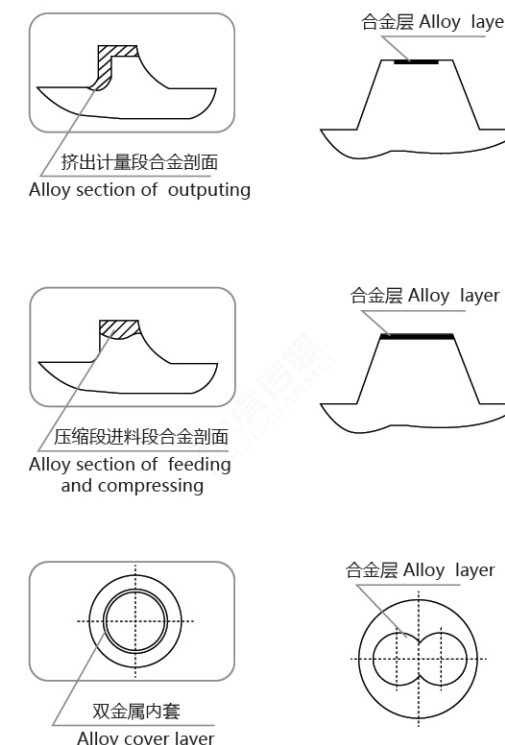
Grade A: 40% tungsten  
 Grade B: 25% w  
 Grade C: 95% w  
 Alloy hardness:  
 HRC 56~65°C

### 技术指标 Technical indicators:

氮化层深度 Depth of nitration case: 0.5~0.8mm  
 氮化硬度 Hardness of nitration: 950~1020HV  
 氮化脆度 Fragility of nitration: Less than grade 1  
 表面粗糙度 Roughness of the surface: Ra 0.4um  
 螺杆直线度 Linearity oh the screw: 0.015mm  
 双合金硬度 Hardness of double alloys: HRC55-62  
 双合金深度 Depth of double alloys: >2mm

### 技术参数:

双金属机筒就是在机筒内壁浇铸一层2-5mm的耐磨耐腐蚀的、耐高温的合金, 其有效使用寿命比普通氮化机筒大大提高, 对于加工工程塑料、氟塑料、聚砜、PPO特殊类型的塑料等, 双金属的优越性尤为明显。  
 本公司生产的单螺杆双金属螺杆, 采用特殊合金粉末在螺杆螺棱部分喷焊合金, 可以针对不同功能的螺杆采用不同的合金和焊合方式。  
 双合金螺杆也从以往的PTA牙顶喷焊, 更新设备采用高压速(HP/HVOF)全面合金披覆的熔射技术。WPT1耐腐蚀型合金适用于尼龙、PVE、PC、PMMA等, WPT2耐磨耐高温型合金适用于尼龙玻纤、磁粉、铝镁粉、电木注塑等, WPT3兼有WPT1、WPT2两种特性, 耐磨耐腐蚀耐高温。  
 双合金熔胶机筒方面。从以往的合金含钨10%提升至含碳化钨30%及50%, 可加工长度亦从3000mm提升至4000mm。



### Technical parameter:

The bimetallic barrel for single screw is a kind of barrel moulding 2-5mm-thick alloy coat on the barrel inner wall which has excellent corrosion resistance,abrasion resistance and high working temperatre.And its useful service life is grreatly improved contrast to the common nitrided barrel.Bimetal has more obvious advantages when procesing special plastics to enhance the abrasion life, such as engineering plastics,fluorine plastics, PPO and ets.  
 The company uses special alloy powders being sprayed and welded on the screw' s ridge,and used different alloys and welding methods for the screw of different functions.  
 For our bimetallic screw,we have adopted a new tech-nology of surface hardening process by the whole screw surface instead of only hard facing the screw flights by PTA treatment.  
 For bimetallic barrel,we have raised its tungsten carbide content to 30% and 50% from the previous 10% of tungsten carbide and increased the processing length to 4000mm form the previous length of 3000mm.



螺杆种类特性

Screw Type Characteristics



| 产品<br>product   | 材料与工艺<br>Materials and workmanship  | 硬度<br>hardness |
|---|---|----------------|
| 机筒合金<br>Bimetallic Barrel   | 45# 或 40Cr 或 42CrMo<br>45# or 40Cr or 42CrMo  | HRC58-62       |
| 螺杆合金 (螺棱表面堆焊合金)<br>Bimetallic Screw<br>(Bimetallic Alloy Welded On Screw Flight)                                | 38CrMoAlA氮化螺棱喷焊镍基合金<br>38CrMoAlA Nitriding And Nickel Based Alloy Welded On Screw Fight                               | HRC58-62       |
| 螺杆合金 (出料段4牙螺棱表面及斜面处堆焊特殊合金)<br>Bimetallic Screw (4 Screw Flight On Discharging Part Welded The Special Alloy)    | 38CrMoAlA氮化出料段4牙螺棱表面及斜面处堆焊特殊合金<br>38CrMoAlA Nitriding Screw And 4 Flight On Discharging Part Welded Special Alloy     | HRC58-62       |
| 螺杆合金(连体螺杆出料段4牙螺棱表面及斜面处堆焊特殊合金)<br>Bimetallic Screw (4 Screw Flight On Discharging Part Welded The Special Alloy) | 38CrMoAlA氮化连体螺杆出料段4牙螺棱表面及斜面处堆焊特殊合金<br>38CrMoAlA Nitriding Screw And 4 Flight On Discharging Part Welded Special Alloy | HRC58-62       |
| 螺杆镀铬<br>Screw Plated Hard Chrome  | 38CrMoAlA<br>38CrMoAlA Nitriding, Plated Hard Chrome  | HRC58-62       |
| 螺杆合金镀铬<br>Bimetallic Screw Plated Hard Chrome   | 38CrMoAlA氮化合金镀金<br>38CrMoAlA Nitriding, Welded Bimetallic, Plated Hard Chrome   | HRC58-62       |

螺杆种类特性

Screw Type Characteristics

| 图形<br>Graphical | 适用范围<br>Scope of application                           | 特点<br>Characteristic                   |
|-----------------|--|--|
|                 | 含有玻纤的塑料<br>Plastic With Glass Fiber                    | 耐腐蚀性好<br>High Corrosion Resistance     |
|                 | 含有30%以下玻纤的塑料<br>Plastic With Less Than 30% Glass Fiber | 耐腐蚀性一般<br>General Corrosion Resistance |
|                 | 含有30%以上玻纤的塑料<br>Plastic With More Than 30% Glass Fiber | 耐腐蚀性好<br>High Corrosion Resistance     |
|                 | 电木塑料<br>Bakelite Plastic                               | 耐腐蚀性好<br>High Corrosion Resistance     |
|                 | 腐蚀塑料<br>Corrosion Resistant Plastic                    | 耐腐蚀性好<br>High Corrosion Resistance     |
|                 | 腐蚀塑料<br>Corrosion Resistant Plastic                    | 耐腐蚀性好<br>High Corrosion Resistance     |





## 螺杆结构大全

Complete Screw Structure



## 螺杆结构大全

Complete Screw Structure

